

Psalm 15

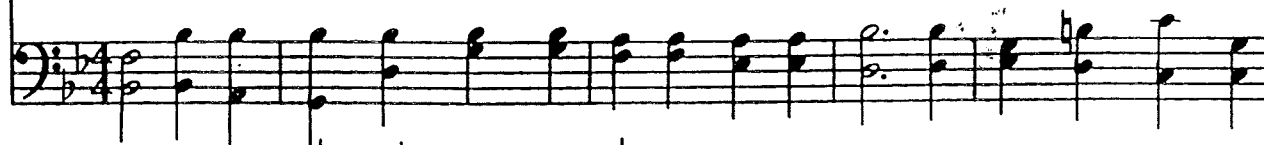
*Lord, who shall abide in Thy tabernacle?
Who shall dwell in Thy holy hill?*

from: Psalm 15
C. H. Spurgeon (1892)

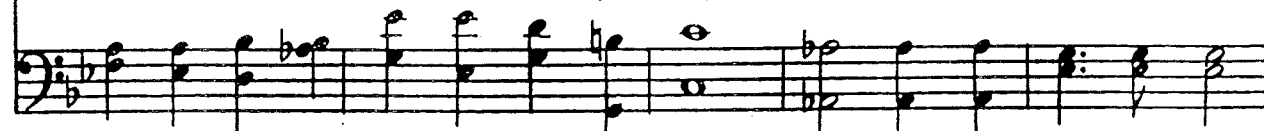
Keith Gates
Hymn #1 (1971)



Lord, I would dwell with Thee, on Thy most ho - ly hill; Oh, shed Thy grace a -
The vile, though proud - ly great, No flat - ter'r find in me; I count Thy saints of



broad in me to mold me to Thy will. Thy gate of pearl stands wide
poor es - tate Far nob - ler com - pan - y. Faith - ful, but meek - ly kind,



For those who walk up - right; But those who base - ly turn a - side Thou
Gent - le, yet bold - ly true, I would pos - ess the per - fect love that

